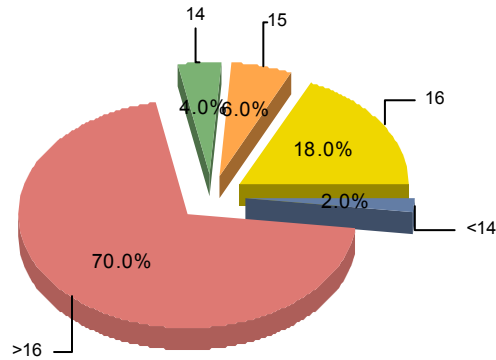


AGE OF CLIENTS

SERVICE TYPE/
PROGRAM

<14 14 15 16 >16

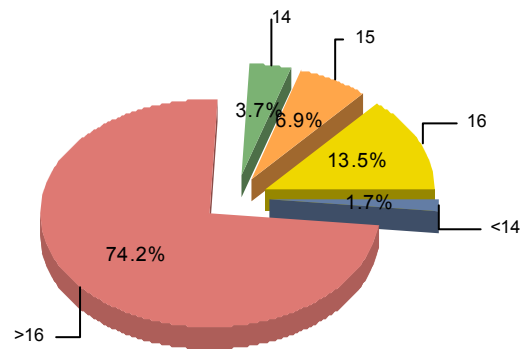
GROUP CARE	<14	14	15	16	>16
	1 2.0%	2 4.0%	3 6.0%	9 18.0%	35 70.0%



<14	1	2.0%
>16	35	70.0%
14	2	4.0%
15	3	6.0%
16	9	18.0%
Total:	50	100.0%

OUTREACH

OUTREACH	<14	14	15	16	>16
	25 1.7%	54 3.7%	102 6.9%	199 13.5%	1,095 74.2%



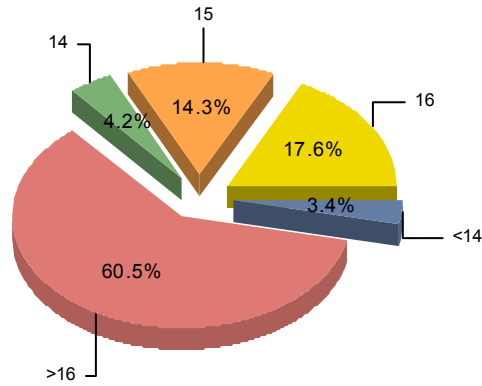
<14	25	1.7%
>16	1095	74.2%
14	54	3.7%
15	102	6.9%
16	199	13.5%
Total:	1475	100.0%

AGE OF CLIENTS

SERVICE TYPE/
PROGRAM

<14 14 15 16 >16

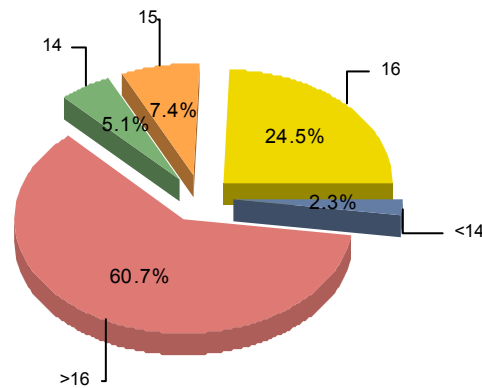
SERVICE TYPE/ PROGRAM	<14	14	15	16	>16
RES TREATMENT	4 3.4%	5 4.2%	17 14.3%	21 17.6%	72 60.5%



<14	4	3.4%
>16	72	60.5%
14	5	4.2%
15	17	14.3%
16	21	17.6%
Total:	119	100.0%

SHELTER

<14	12 2.3%	27 5.1%	39 7.4%	129 24.5%	320 60.7%
-----	---------	---------	---------	-----------	-----------



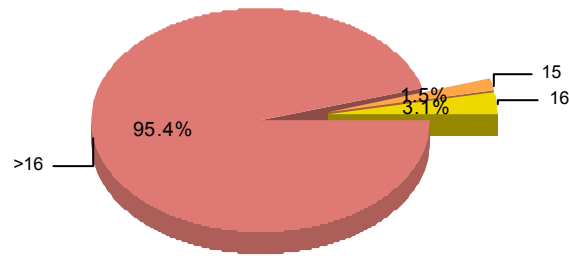
<14	12	2.3%
>16	320	60.7%
14	27	5.1%
15	39	7.4%
16	129	24.5%
Total:	527	100.0%

AGE OF CLIENTS

SERVICE TYPE/
PROGRAM

<14 14 15 16 >16

SHORT TERM GC	0	0.0%	0	0.0%	2	1.5%	4	3.1%	124	95.4%
---------------	---	------	---	------	---	------	---	------	-----	-------



<14	0	0.0%
>16	124	95.4%
14	0	0.0%
15	2	1.5%
16	4	3.1%
Total:		130 100.0%

TOTAL	42	1.8%	88	3.8%	163	7.1%	362	15.7%	1,646	71.5%
-------	----	------	----	------	-----	------	-----	-------	-------	-------